

Installation Manual



Contents

1. Front page	1
2. Contents	2
3. Compliance with the law	3
4. Warranty	4
3. Main parts directions	5
4. Assembling the v brake	7
5. Assembling the front wheels	8
5. Assembling the chassis frame	9
6. Assembling corner iron for front box	10
7. Assembling the v brake cable	11
8. Assembling the wooden box	13
9. Assembling the wire tube.	14
10. Attaching the reflectors, pedals and safety belts	14
11. Assembling the disc brake	15

Compliance with the law

Congratulations on your purchase of your new cargo bike. Your new cargo bike is an excellent piece of personal transportation equipment that will give you good service for many years.

Before you start using your cargo bike, we want you to be aware of a few important points. Please read this section carefully.

The Lithium Battery of Your cargo bike

Your cargo bike is equipped with the latest battery technology. The lithium battery is much lighter than lead- or nickel-based batteries that are being used in some older models.

Your First Ride

When you are ready to get on your cargo bike for the first time, be VERY CAREFUL because the cargo bike, when in active power-assisted mode, moves faster than a regular bicycle. Take your cargo bike to an area with a lot of open space before you start. Do not start pedaling hard as soon as you get on the cargo bike (as you normally would with a regular bicycle), as the cargo bike will accelerate under pedal-assist mode and you may be unprepared for the sudden increase in speed. However, after a few times, you will enjoy using the pedal-assisted function.

Warranty

How the warranty applies

See the seller's store policy for details.

How the warranty does not apply

When the bicycle is used negligently or has damage resulting from a traffic accident.

Normal wear and tear.

Poor maintenance or modifications that no longer comply with regulations or original specifications.

Damage due to external causes.

The bicycle is used for rental.

The battery pack is used incorrectly or damaged. This also applies to improper charging.

Compensatory costs arising from damages or accidents, or cost incurred by loss of the bicycle's usage.

How the warranty works:

Original defective parts that are sent or returned to the dealer for assessment will be replaced by the same or equal value part.

Labor and transportation charges are not included.

Main parts directions



- 1. Handle bar&grip
- 2. Gear shift(6 speed,shimano system)
- 3. Brake lever
- 4. Wooden Box
- 5. Corner iron
- 6. Reflector
- 7. Chassis frame

- 8. Front wheel
- 9. LED lights
- 10. Pedal cover screws
- 11. Blade
- 12. Rear frame
- 13. Crank



- 11. Wire tube
- 14. Chain wheel&crank
- 15.Pedal
- 16.Rear wheel
- 17.Rear fender
- 18.Rear reflector
- 19.Seat post lock
- 20. Seat post

- 21.Sadele
- 22.Carrier
- 23.LED light
- 24.Battery
- 25.Motor
- 26.Turning controll iron

1. Assembling the v brake & fenders

1. Put the lube in V brake connection place Fix the v brake by inner hexagon socket and tighten it .



2 Install the fender



2. Assembling the front wheels



Tool

1. Connect the front wheel with chassis frame and tight with spanner

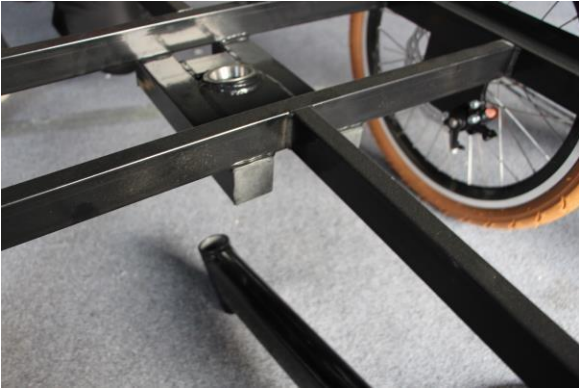


2. Make sure both tyre patterns are same direction

3. Finish

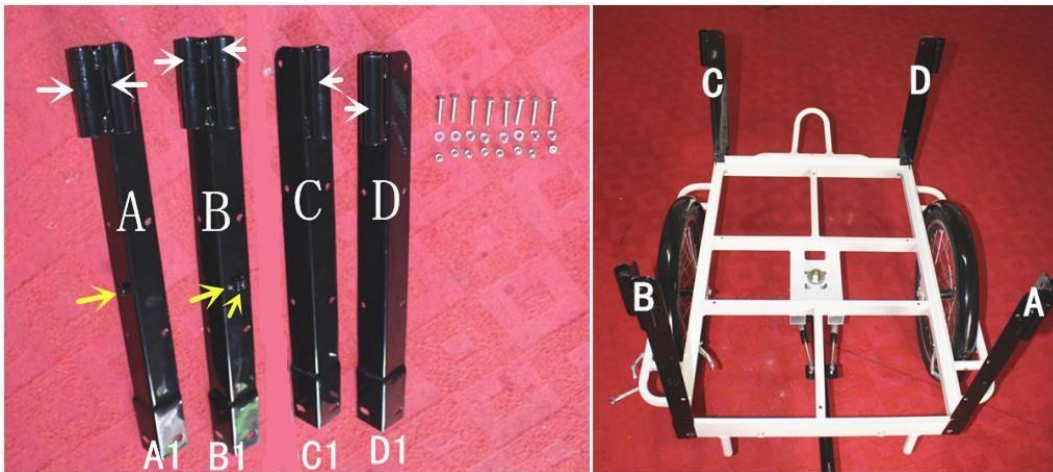


3. Attaching the chassis frame



4. Assembling corner pieces for front box

1. Contact corner iron A1 B1 C1 D1 side with corner of chassis frame by 8 sets of screws, right screws by spanner.
2. Make sure corner iron A B C D is same order as pictured.



5. Assembling the v brake cable

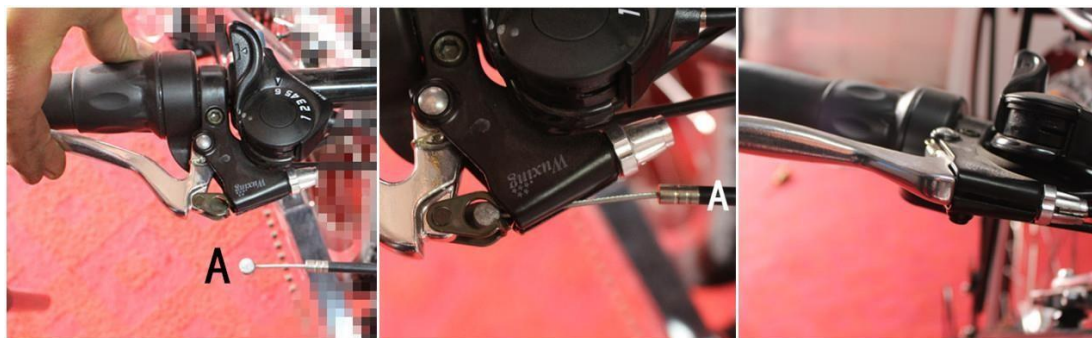
Parts & Tool



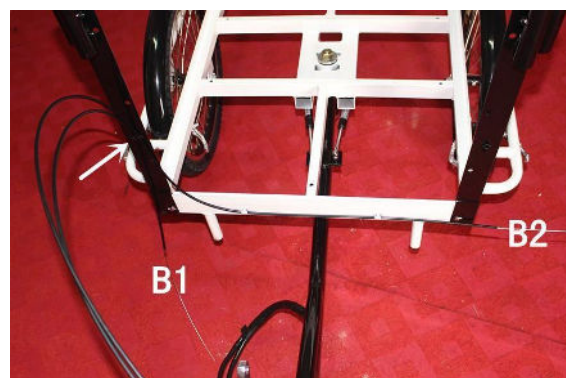
1. Attach v brake rubber with front wheel rim, tighten v brake with inner hexagon spanner. Finish 4 brakes same way.



2. Put brake cable A side into left brake handlebar.



3. Put brake cable through label hole on corner iron B, brake cable B1(short) in left hole, B2(long) in right hole.



4. Put brake

cabel

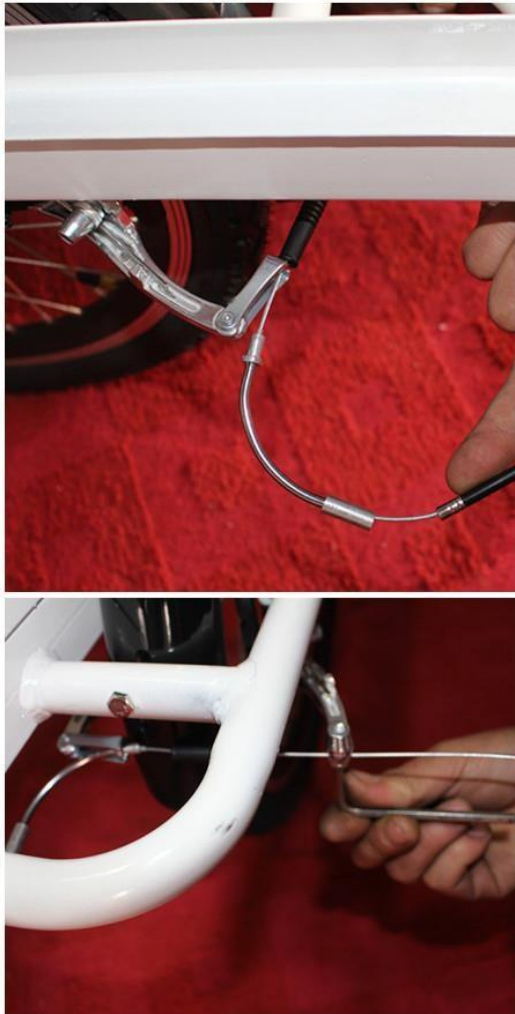
thought

chassis

frame and

the threading

line, rubber cover accordingly.



5. Fill line into v brake, tight it with inner hexagon spanner.

6. Adjust brake is loose v brake.



6. Assembling the front cargo box

1. Put plate in place then use screws to attach it.

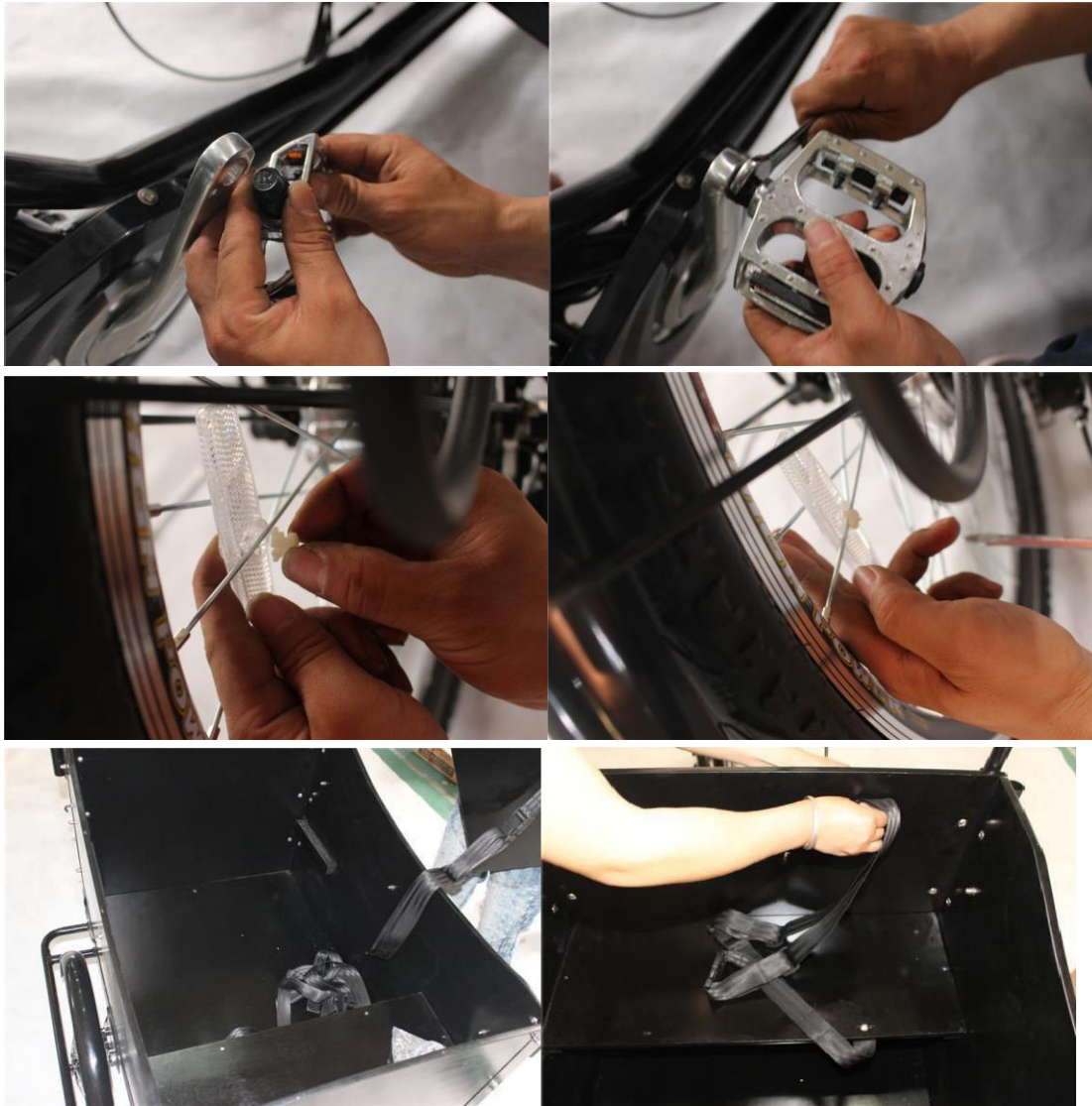


7. Assembling the wire tube



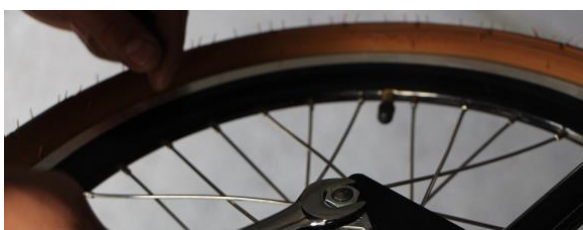
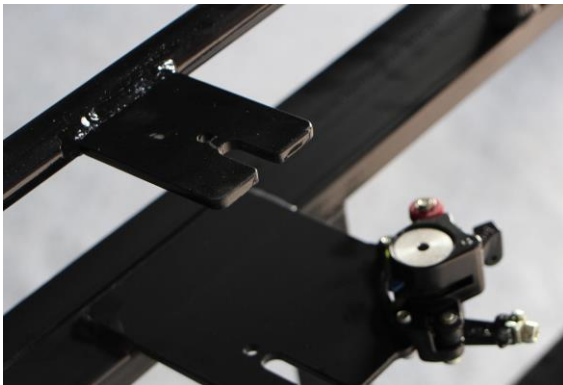
8. Attaching the reflectors, pedals and safety belts

Ready to pedal, reflectors and seat belts, assembly tools



9. Assembling the disc brake

9.1 Install the brake disc firstly, then front wheels



9.2 install disc brake cables



10.Assembly is finished

According to the above operation can complete these simple steps.

Congratulations ! You have finished the assembly.