

Installation Manual



Main parts directions



1. Rear Frame

2. Freezer

3. Sink

4. Drawer

5. Cupboard

6. Saddle

7. Gear shift(6 speed, shimano system)

8. Front wheel

9. rear v brake

10. Fender

11. Crank

12. Umbrella

13. Freezer frame

14. Reflector

15. Paddle

16. Springs

Assembly the front wheels



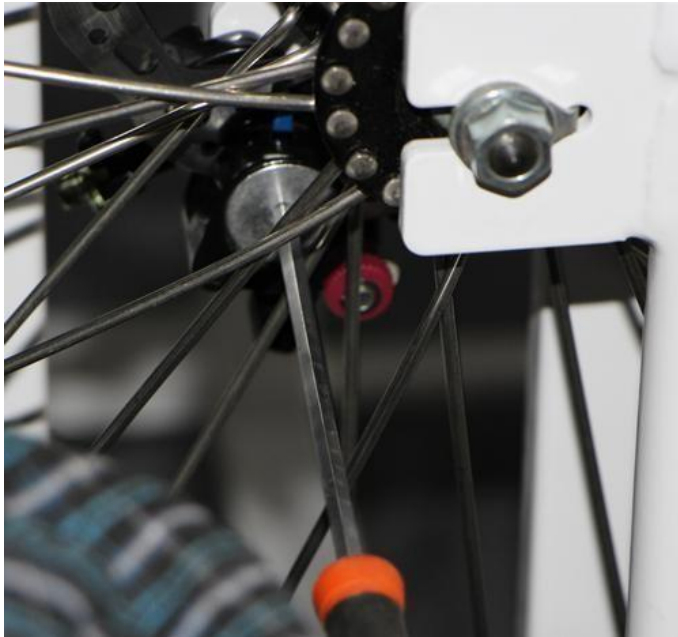
Tool

1. Connect front wheel with chassis frame and tight

With spanner



2. Make sure both tyre patterns are same direction



Connecting the chassis frame





Parts&Tool



1. Fill in the steel circle with A1 in center hole of chassis frame, tight by hammer, fill in A2 other side.



2. Put front shaft into front tube of Rear frame



3. Cover B by C1(with lube), attach rear frame with chassis frame by put shaft into center of chassis frame, put lube around hole



4. Put into C2(with lube), cover by E, tight E with spanner



Assembly the brake cable





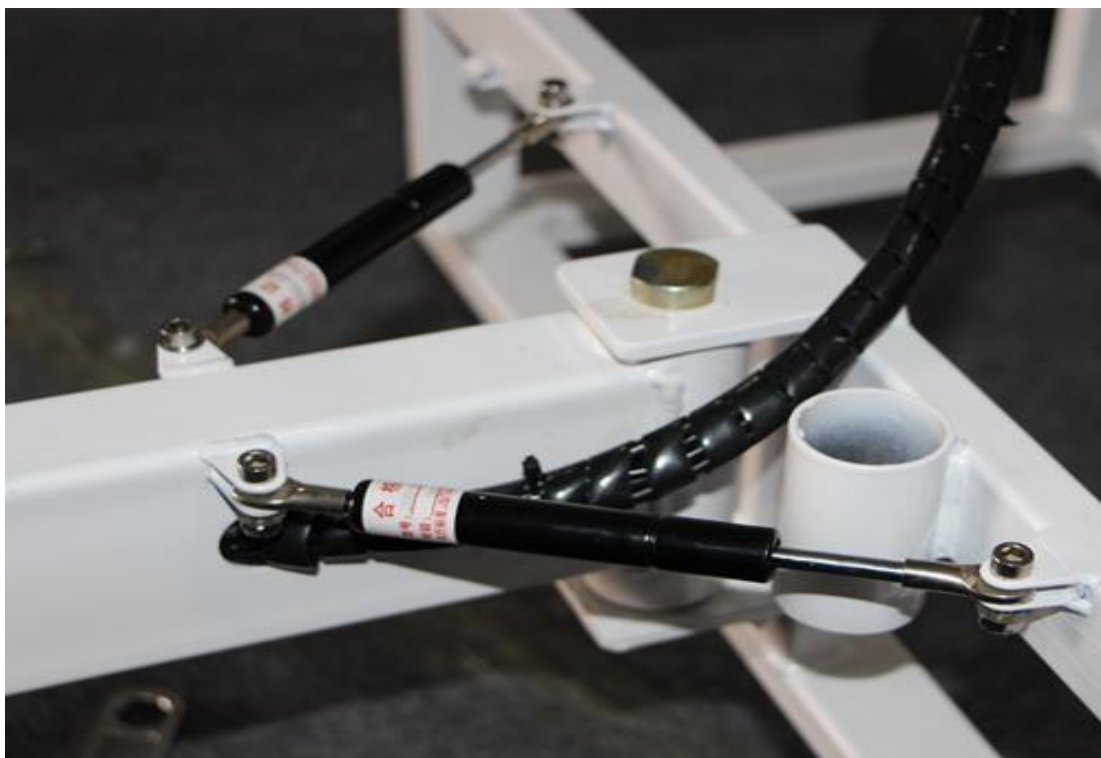




Connect Springs:





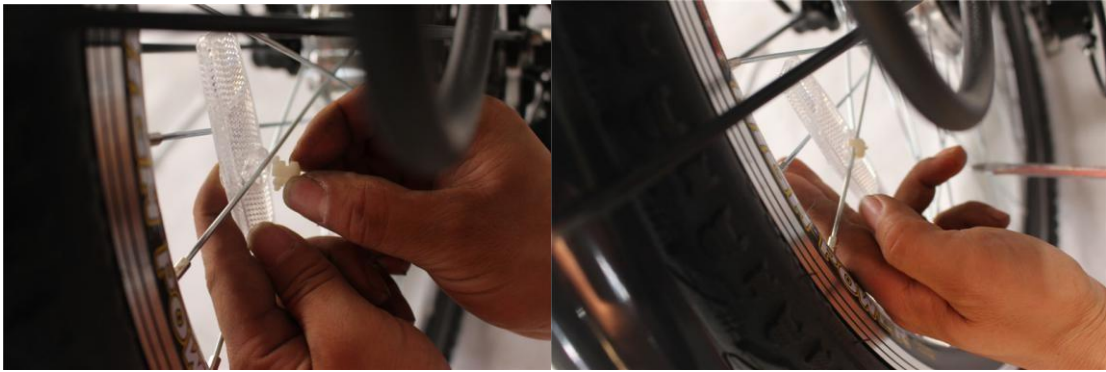


Attaching the reflectors, pedals

Watch out the marker of R and L .

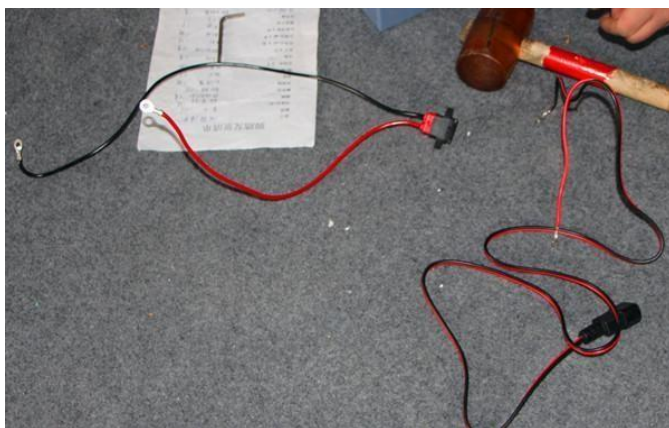






Battery and Connections:

Rechargeable storage battery for freezer and charger:





Positive pole connecting with all red color end.

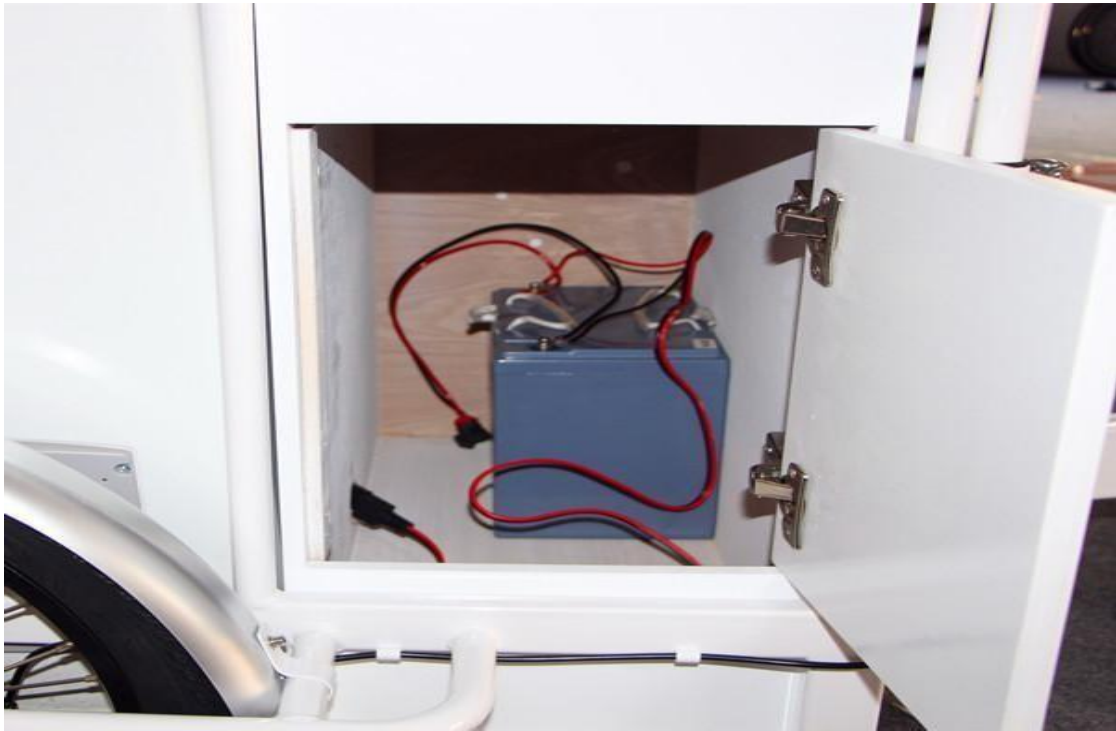
Negative pole connect to blue end with black wires.

CAUTION: ALWAYS AVOID DIRECT CONNECTING IN ANY WAY OF TWO POLAR ENDS.



Plug into freezer through cupboard cabin hole:





Put in Cupboard and freezer:



Assembly finish

According to the above operation can complete these simple steps.
Congratulations ! You finish assembly.

